



Questo stile raccoglie parati adatti al mondo adolescenziale; fin dall'antichità era cultura decorare le pareti.

Gli affreschi degli antichi romani, per esempio, riproducevano alberi e fiori in modo così minuzioso da trasformare le pareti in meravigliosi giardini fioriti.

Anche nel medio evo abbiamo tantissime raffigurazioni, con colline che si estendevano a perdita d'occhio oltre le cinte murarie. Si possono scorgere innumerevoli personaggi, chi danza, chi parla, chi va a cavallo o chi semplicemente coltiva i campi.

Per i più piccoli comunque i paesaggi più belli sono quelli di fantasia, e in questa ottica abbiamo cercato di rappresentare vari decori che possono accendere in loro una luce fantastica.

This style represents a collection of wall-coverings suitable for the teenager world; since ancient times the decoration on walls meant culture. Frescoes of the ancient Romans, for example, reproduced trees and flowers in a such meticulous way to transform the walls into wonderful flower gardens.

Also from the Middle Ages we have been left many representations, with hills that extended as far as the eye could see beyond the walls. You can recognize many characters, those who dance, those who speak, those who ride horse or who simply cultivate the land.

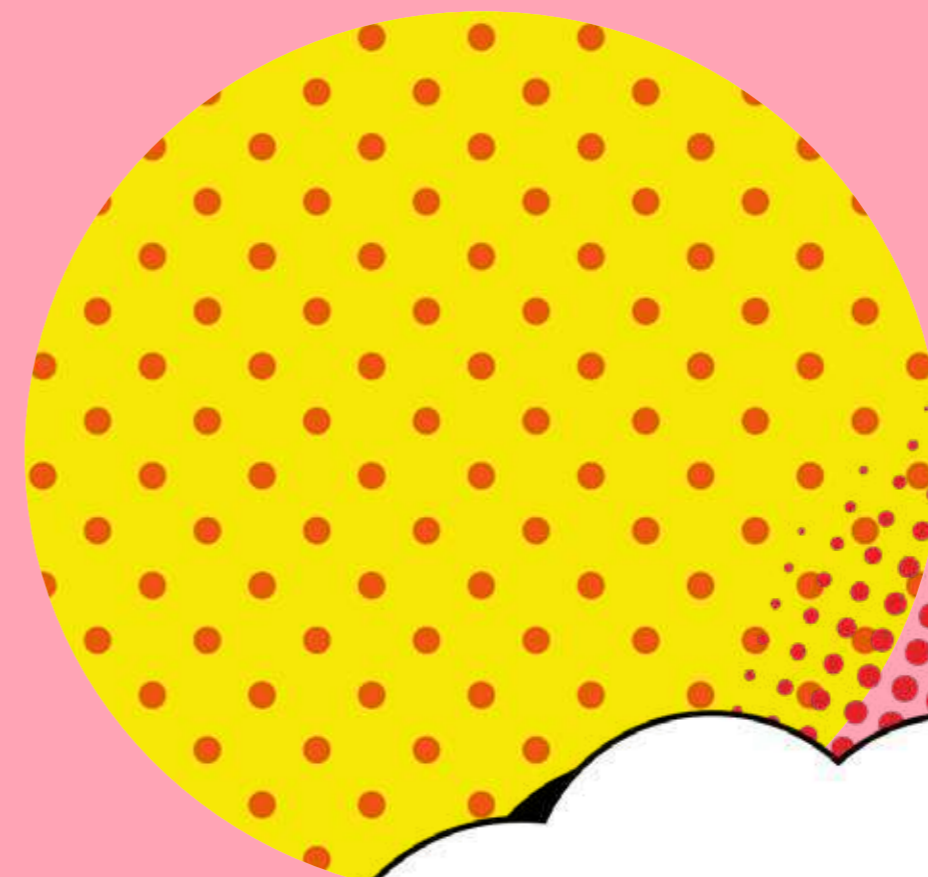
For kids the most beautiful landscapes are those of fantasy and in this perspective we have tried to represent a variety of decorations that can turn on a fantastic light in them.





**MONTE NAPOLEONE**

BY AV+10 DESIGN





**MONTE NAPOLEONE**

495\_002\_MONTE NAPOLEONE

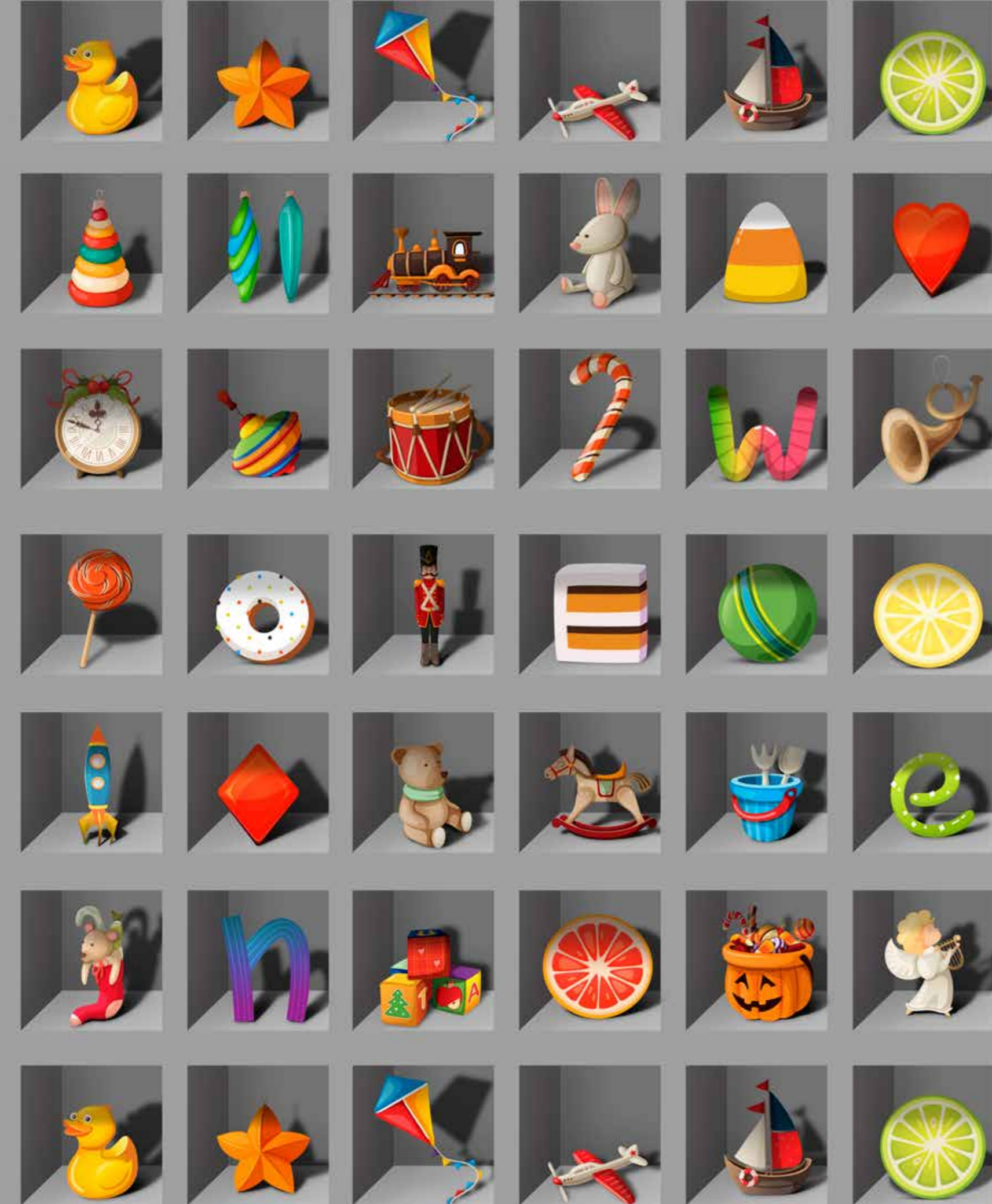




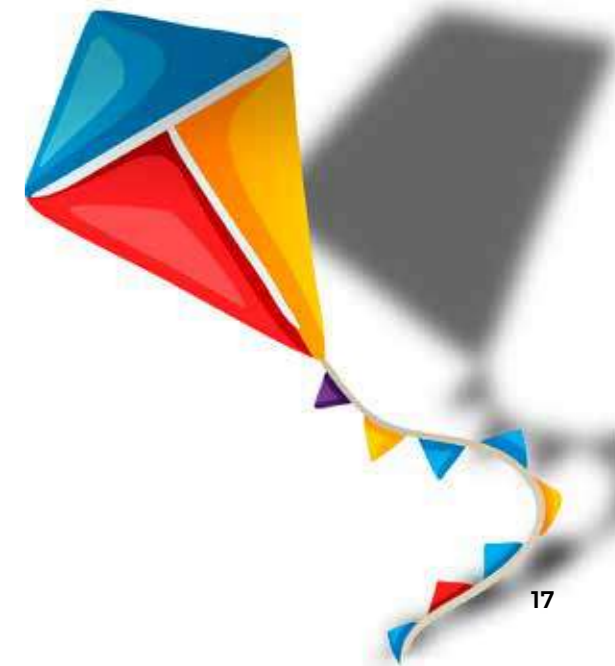


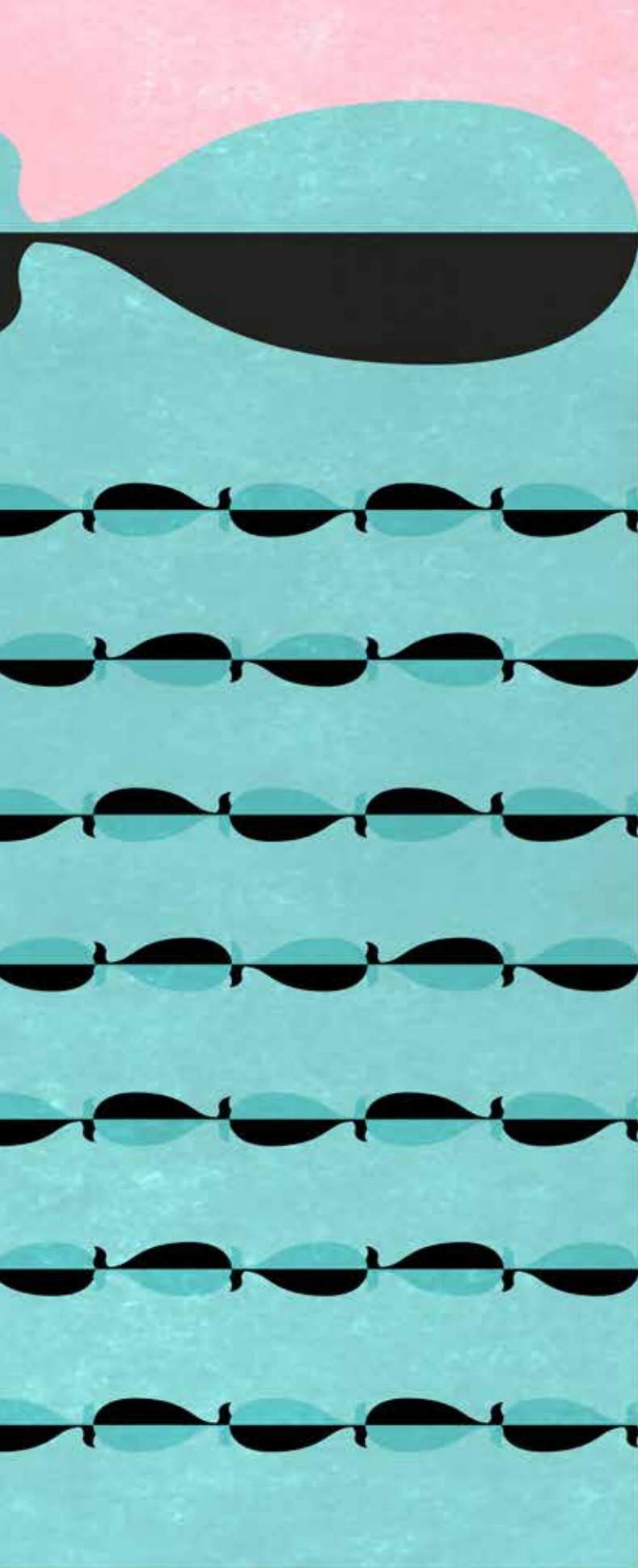
Rendi ancora piu' unica  
la carta da parati.  
Personalizzala con  
le tue foto preferite.  
Let the wall-paper  
be even more unique.  
Customize it with  
your favorite pictures.





494\_005\_TOYS LIBRARY





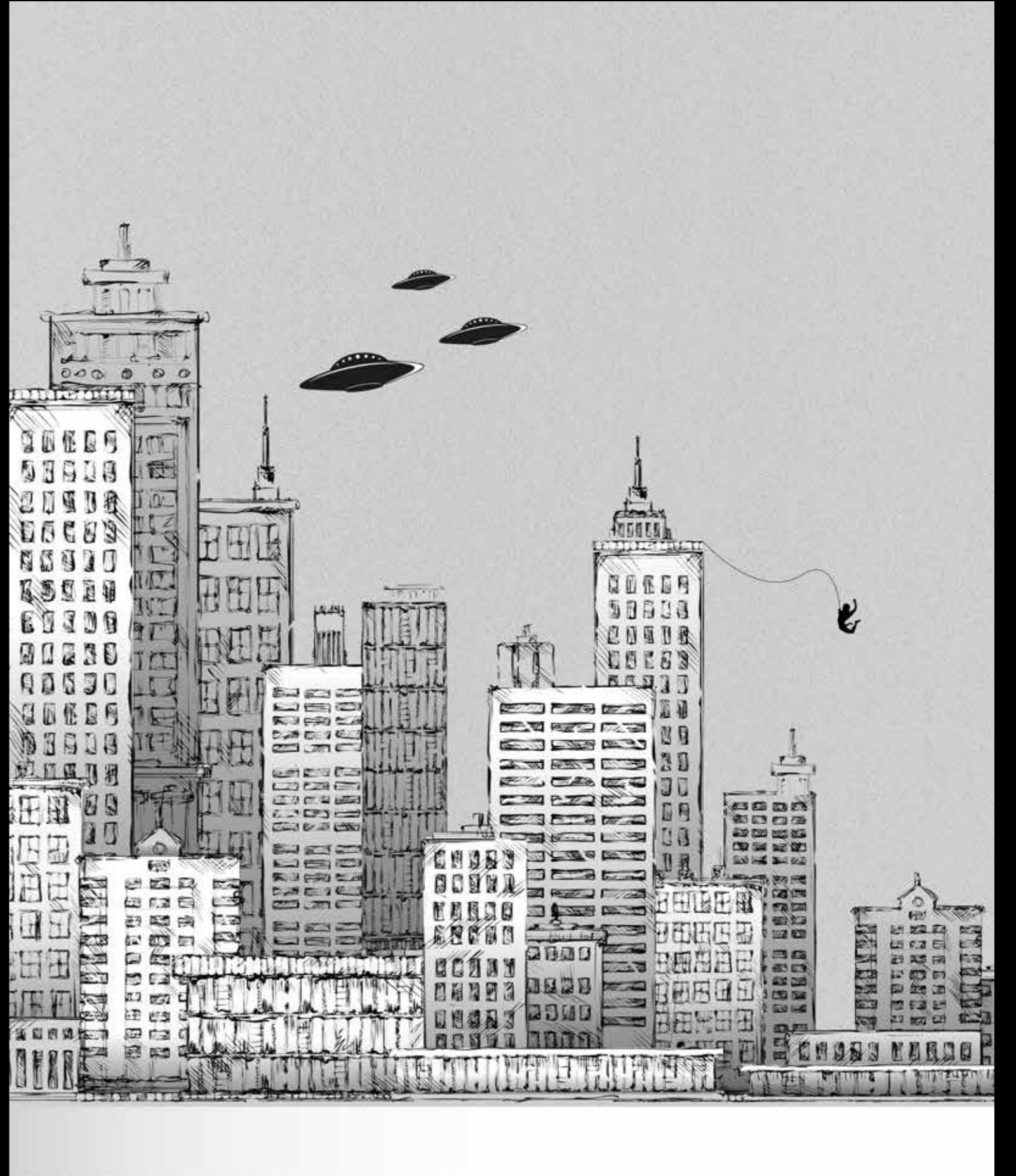
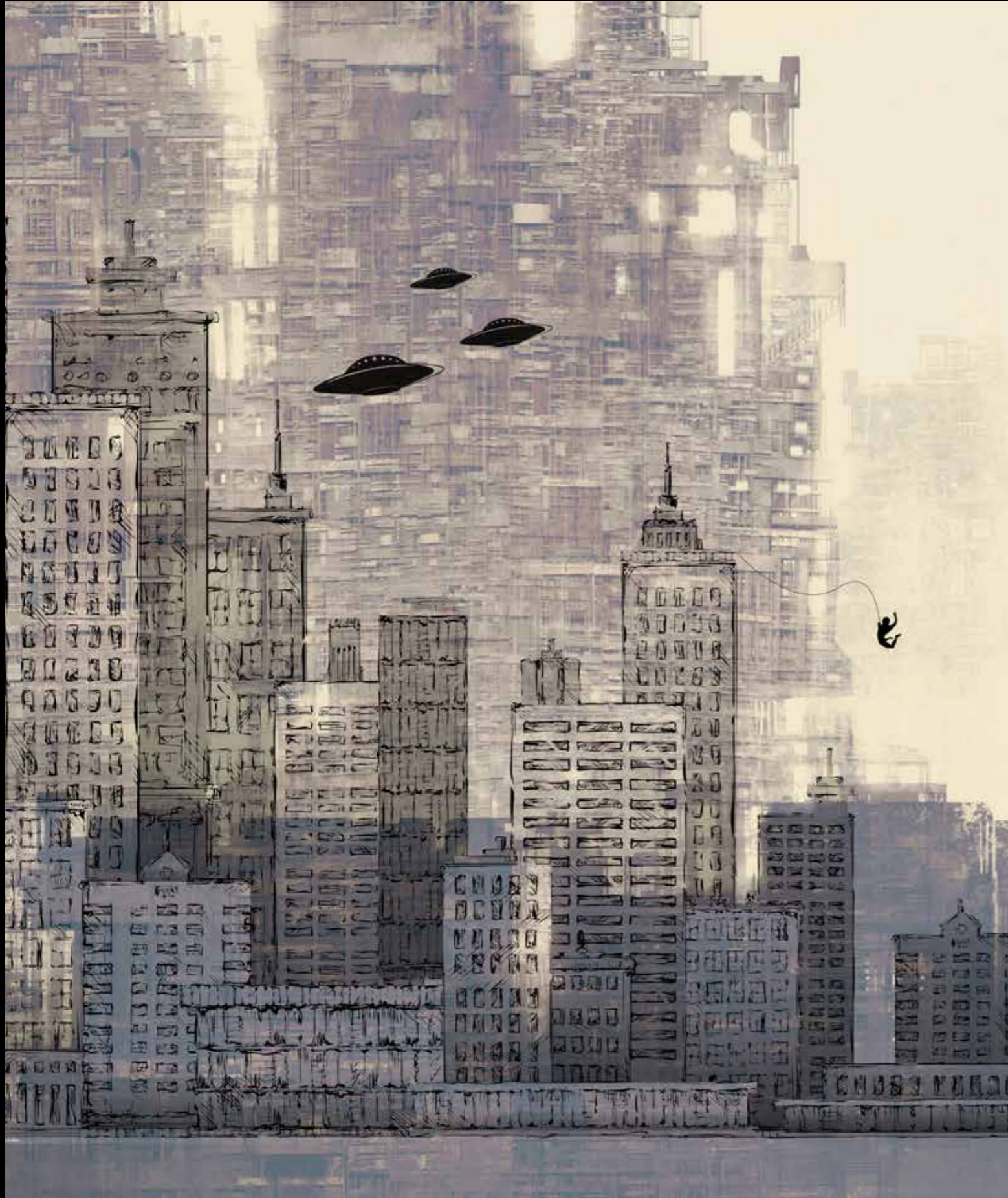
**MOBY**  
496\_001\_MOBY

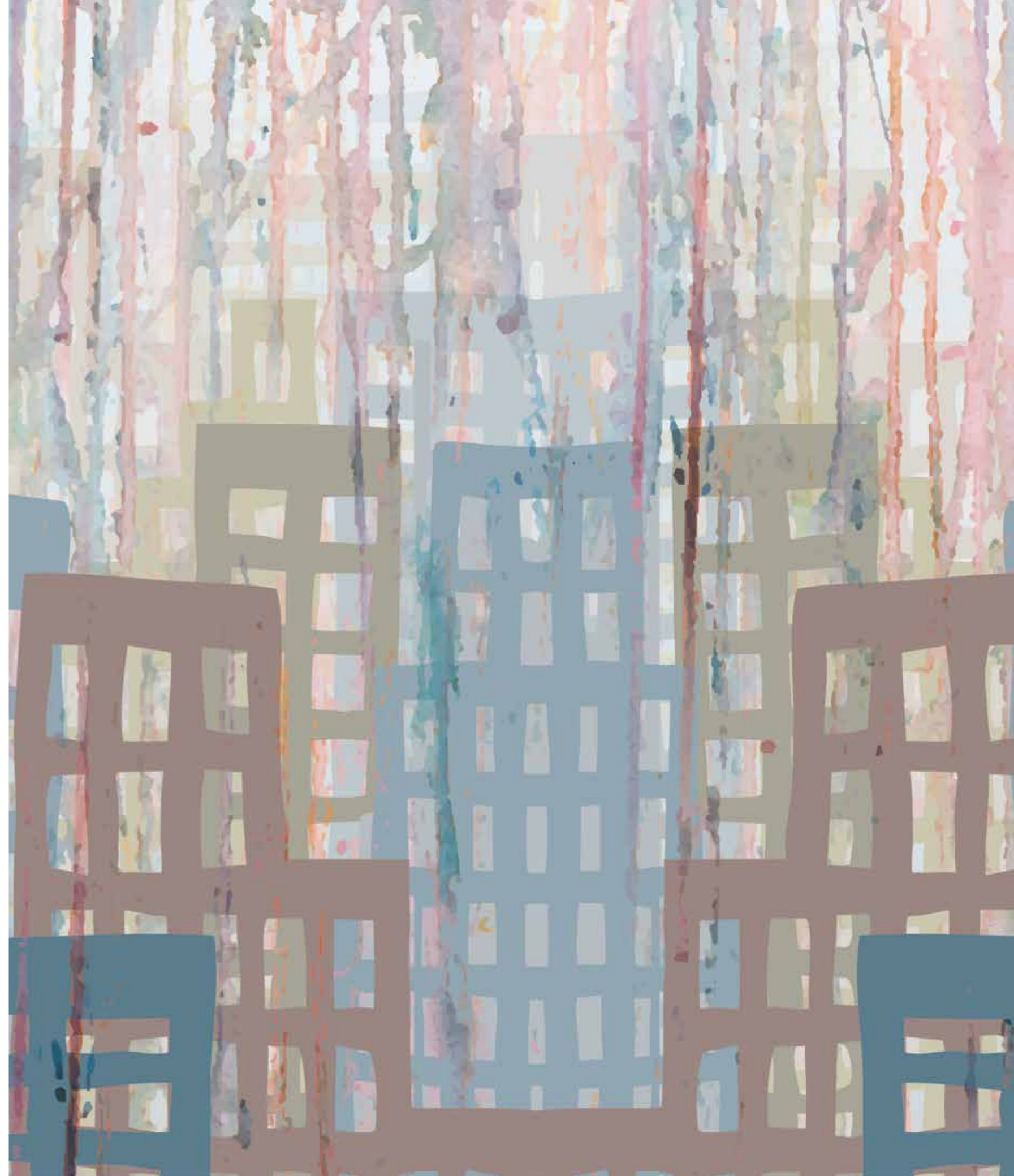


**NEWYORK**

497\_003\_NEWYORK

















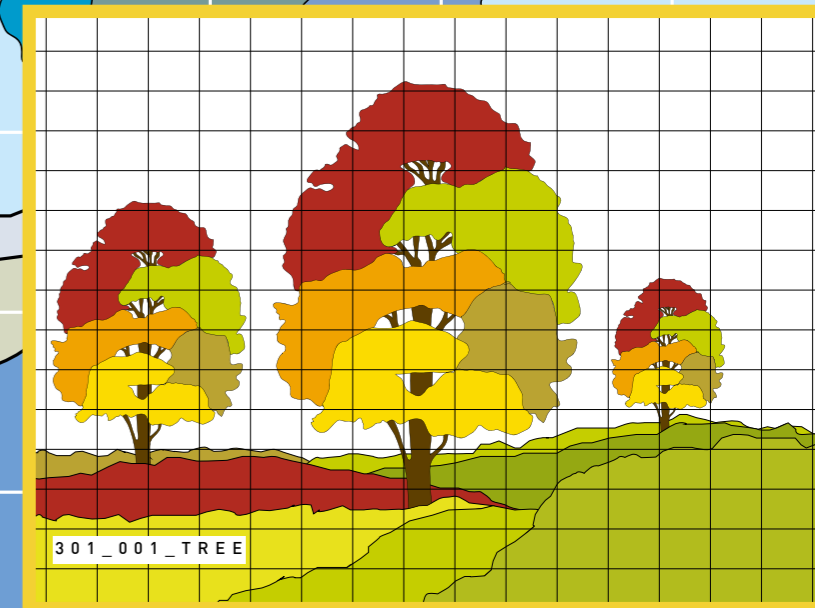
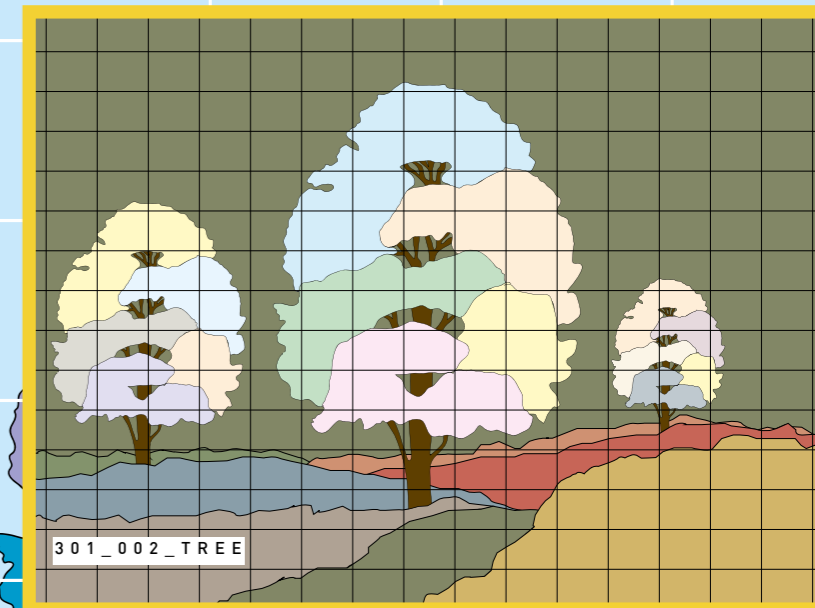
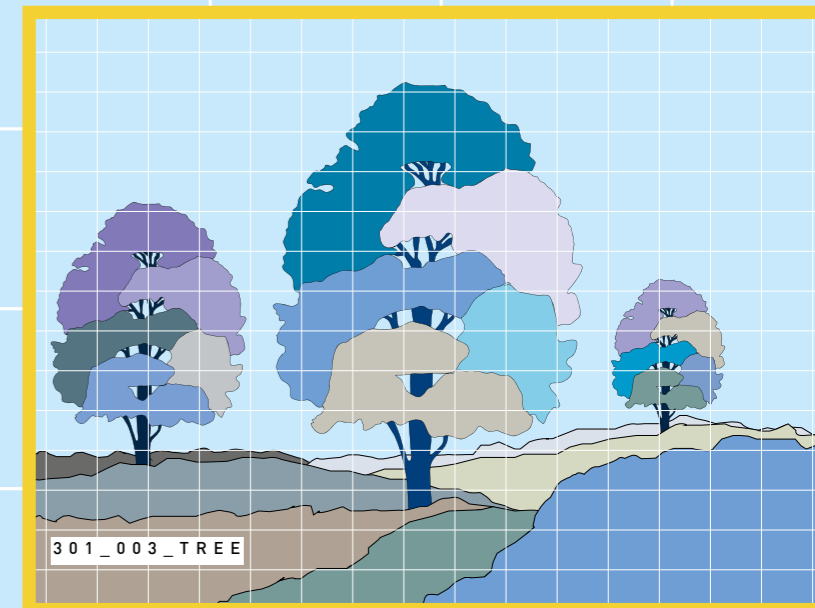
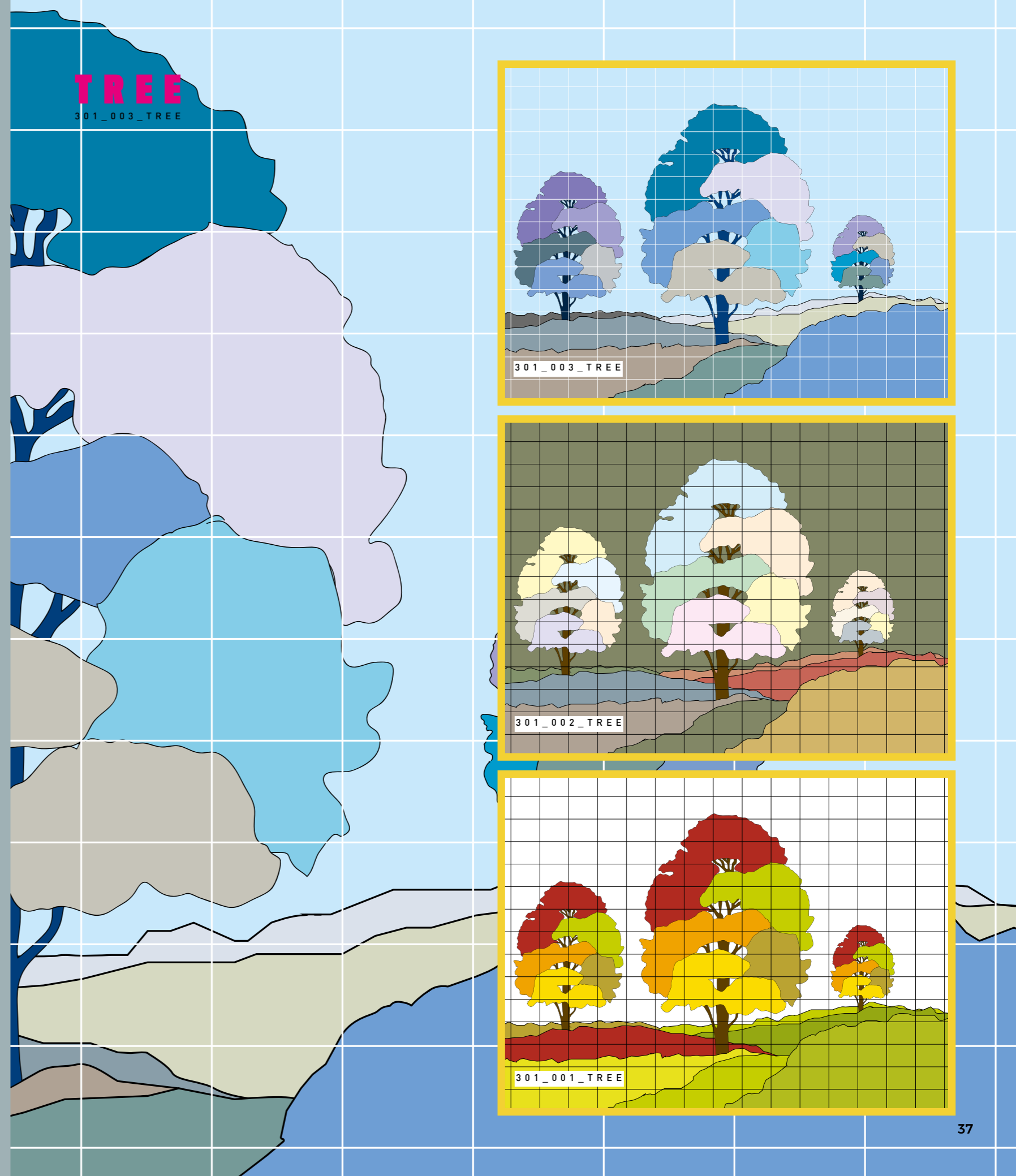
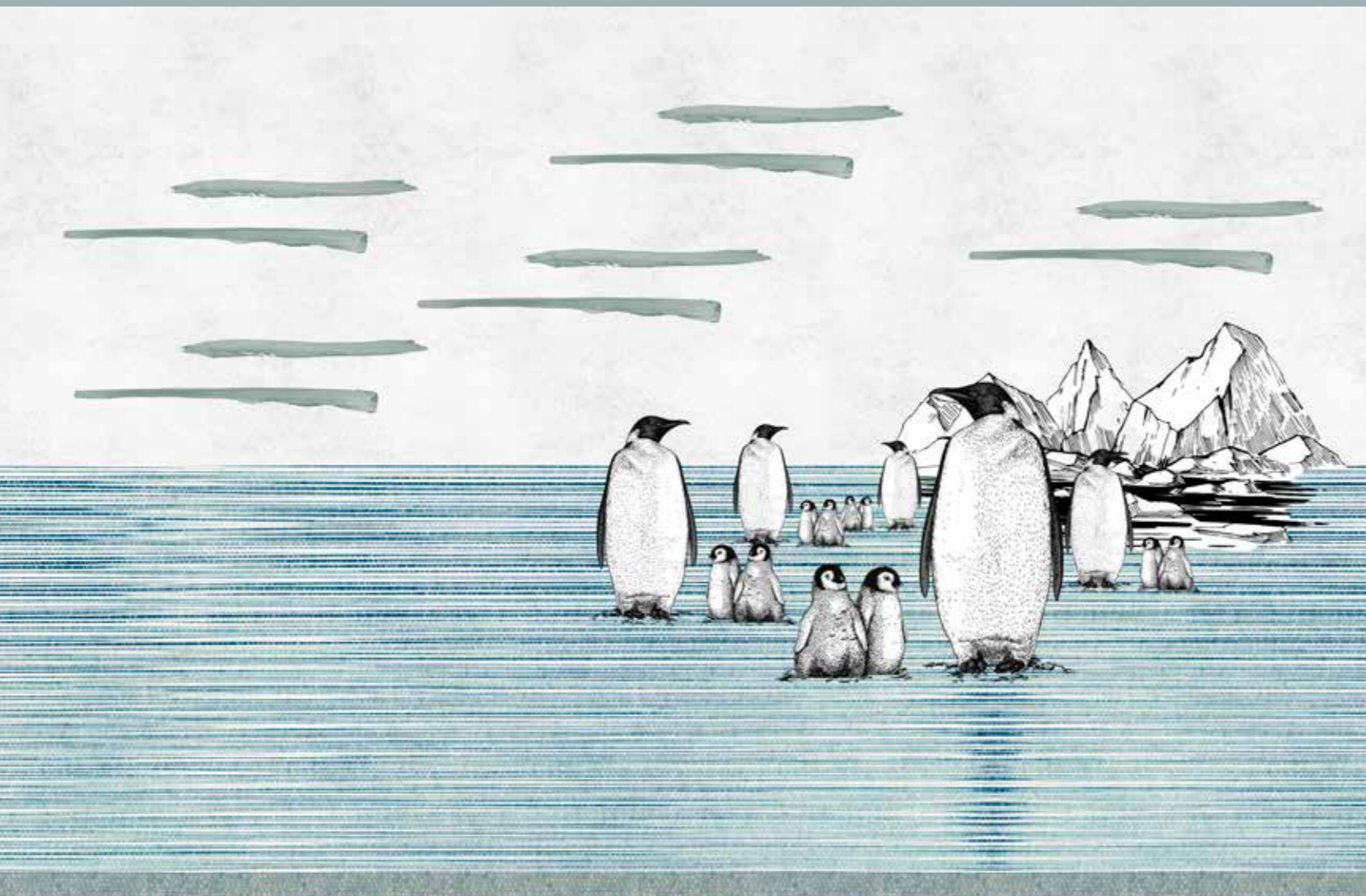
181\_002\_LITTLE ZOO



181\_001\_LITTLE ZOO

# ICE FAMILY

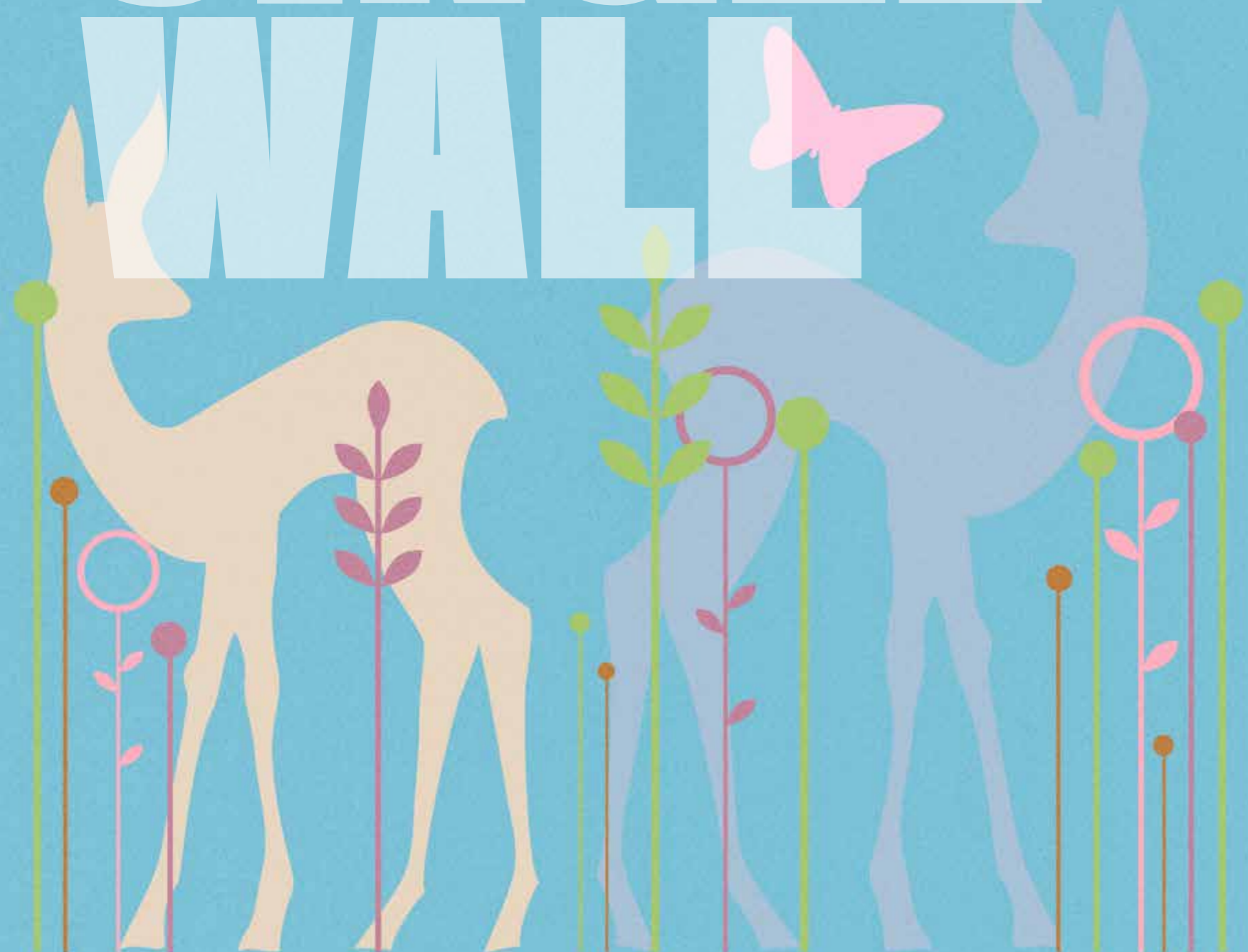
358\_001\_ICE FAMILY



**BAMBI**

057\_002\_BAMBI

# SINGLE WALL





046\_001\_BOMBOLLES



040\_002\_CHARLOT



058\_001\_BLOW



049\_001\_MURALES



046\_002\_BOMBOLLES



040\_004\_CHARLOT



058\_002\_BLOW



045\_001\_RAIN

**UMBRELLA**  
069\_004\_UMBRELLA



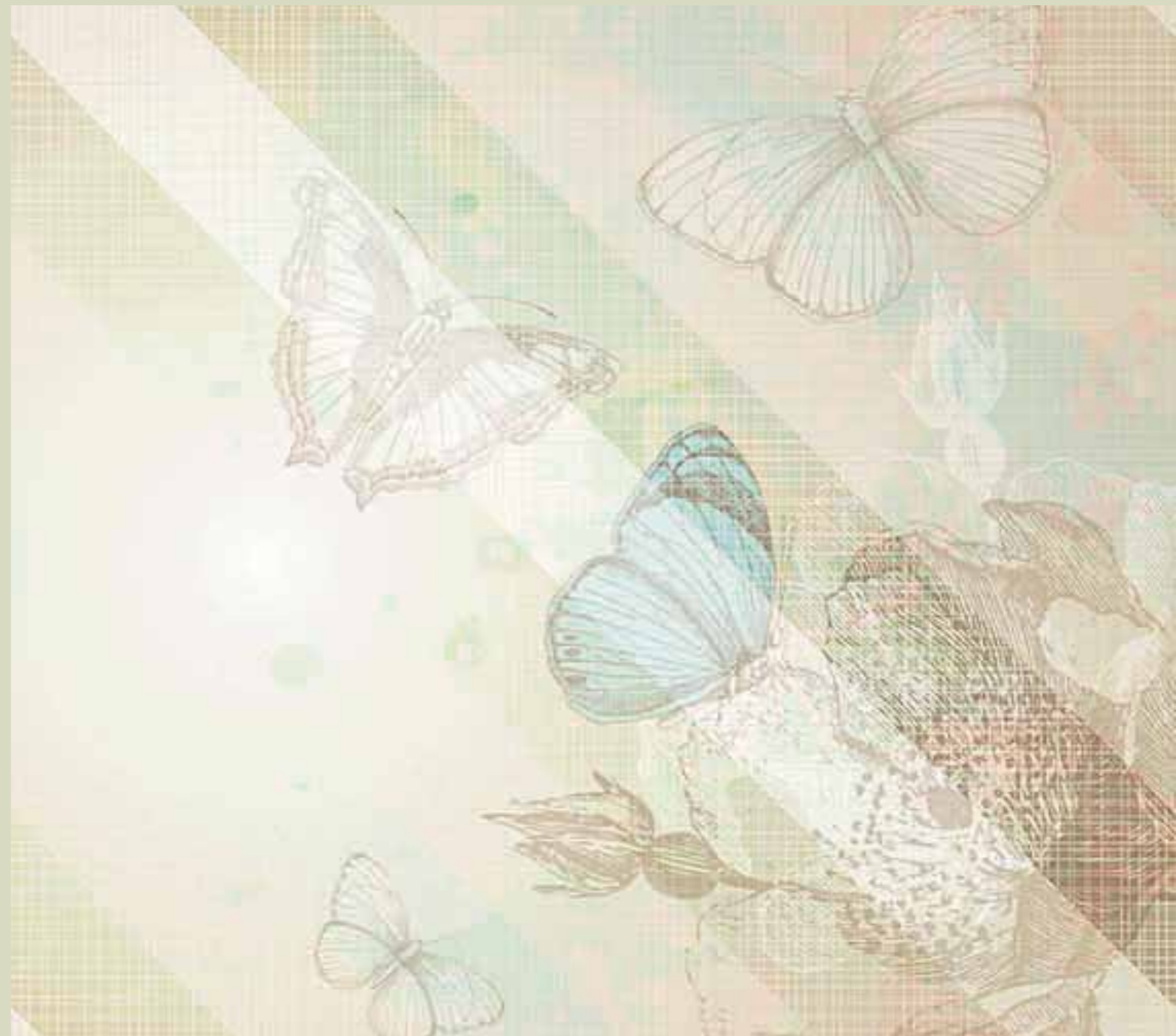
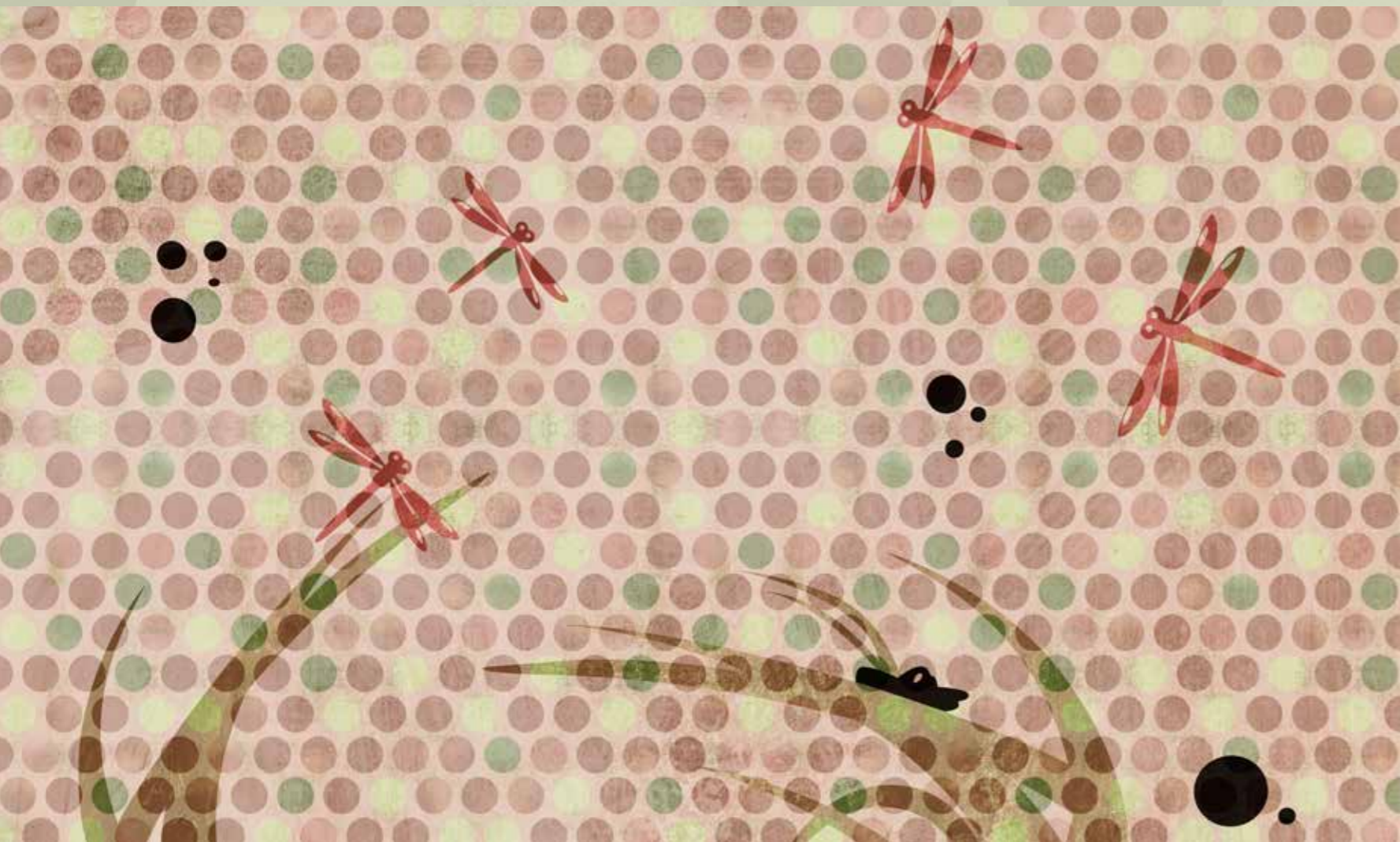
**SWING**  
048\_004\_SWING

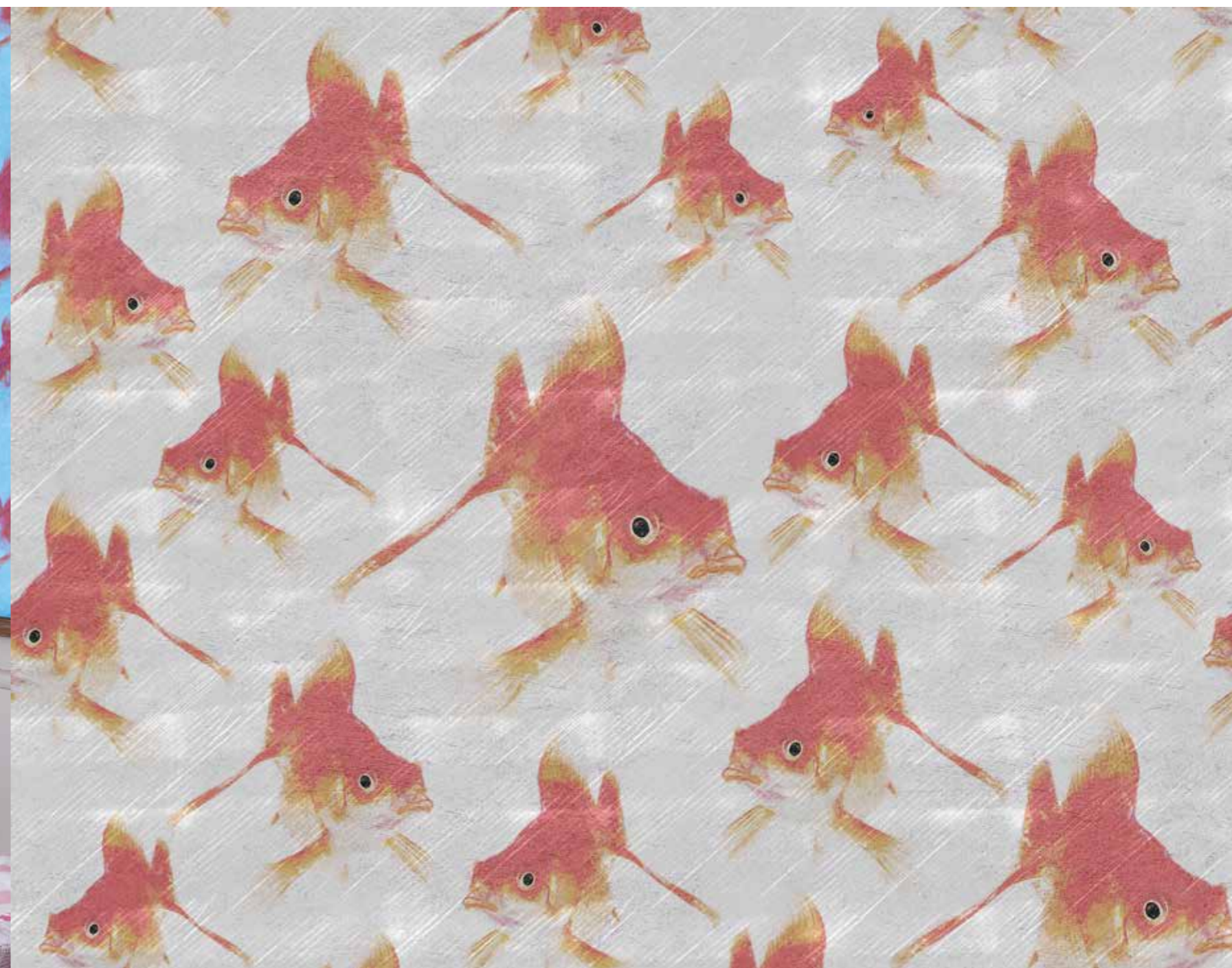


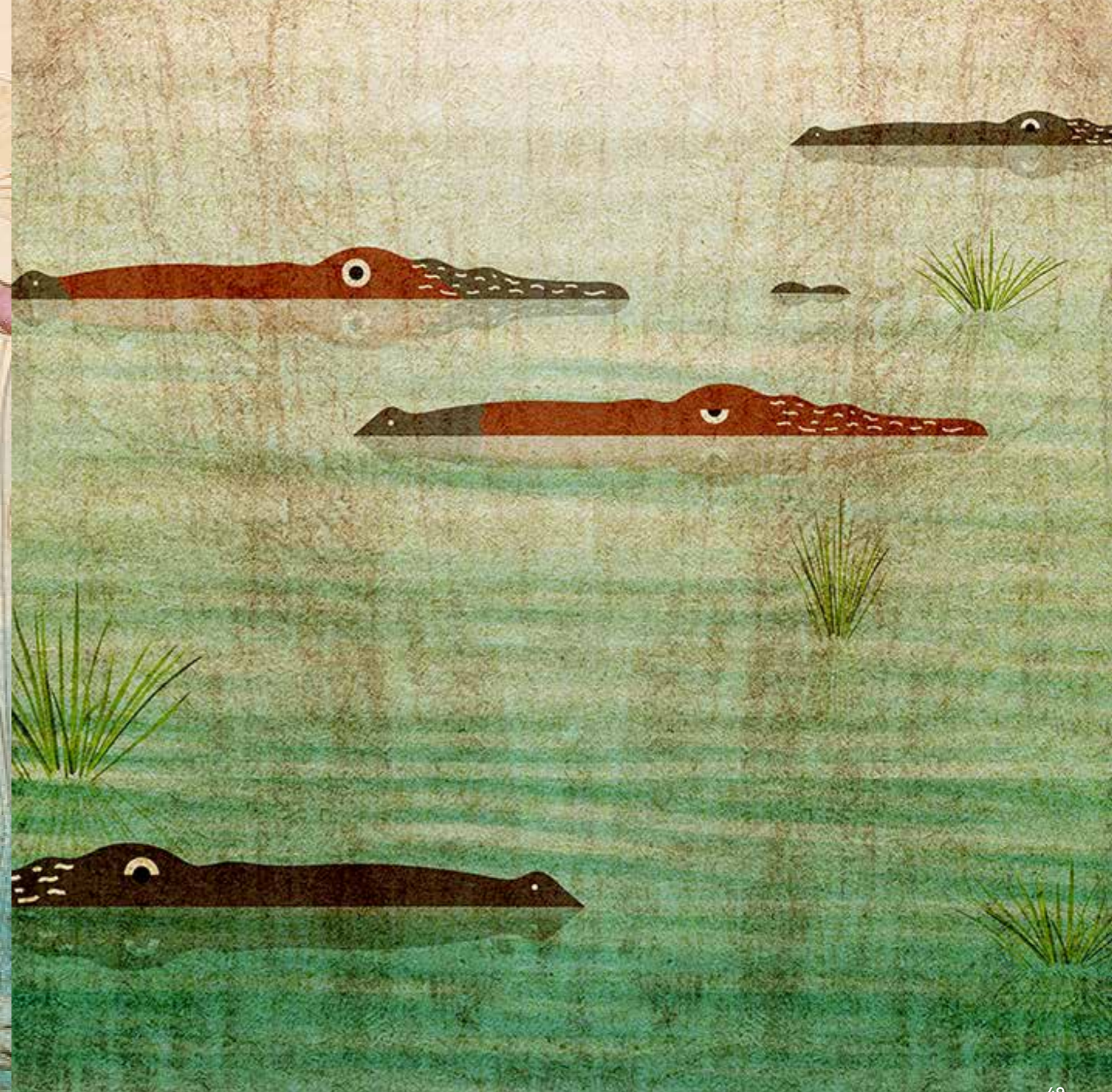
048\_004\_SWING



048\_003\_SWING



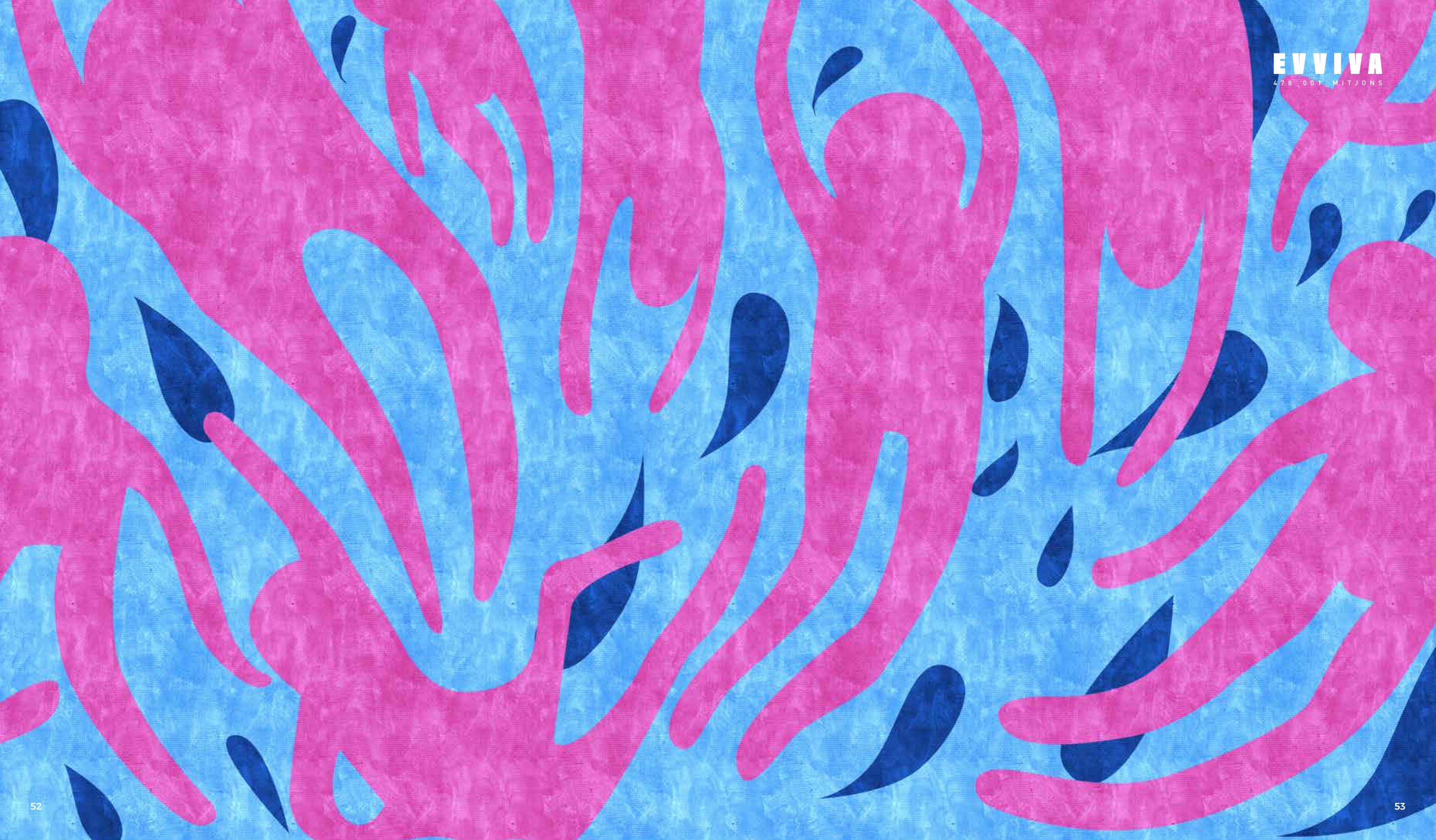




**NOÉ**

270\_001\_NOÉ



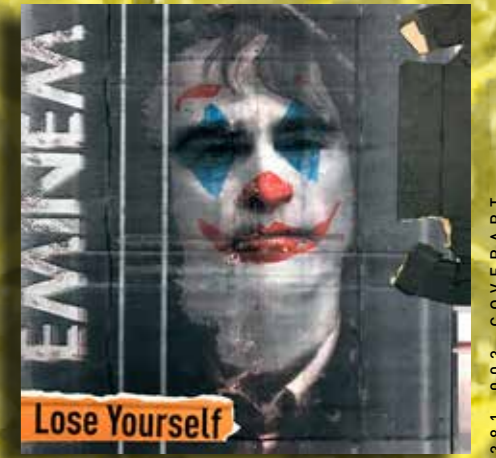




396\_001\_COVERART

# COVERART

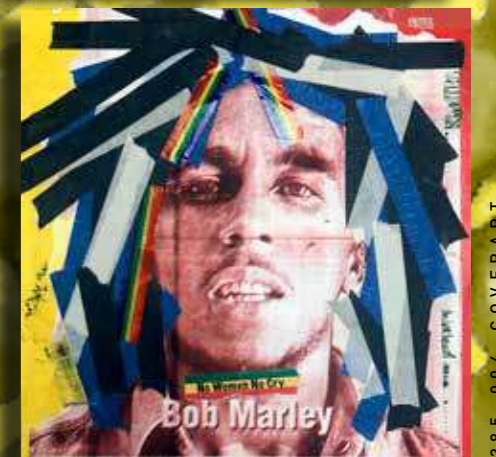
BY MAURO PISPOLI



381\_003\_COVERART



386\_003\_COVERART



385\_004\_COVERART



400\_004\_COVERART



395\_001\_COVERART

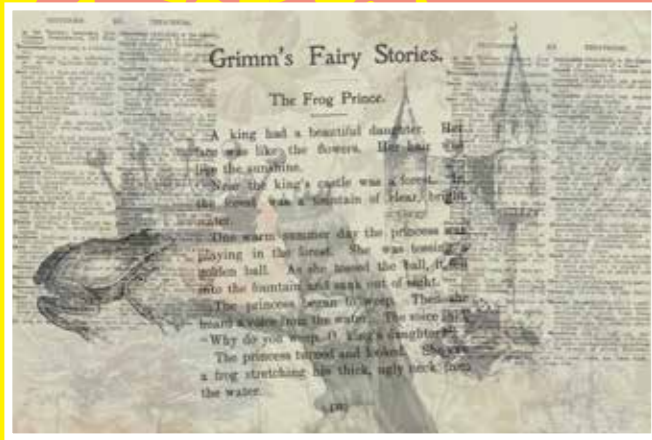


393\_002\_COVERART



382\_004\_COVERART





Grimm's Fairy Stories.

The Frog Prince.

A king had a beautiful daughter. Her name was like the flowers. Her hair was like the sunshine.  
 Near the king's castle was a forest. In the forest was a fountain of clear, bright water.  
 One warm summer day the princess was playing in the forest. She was looking at the fountain. As she looked the ball, it fell into the fountain and sank out of sight.  
 The princess began to weep. Then she heard a voice from the water. The voice said, "Why do you weep, O king's daughter?"  
 The princess turned and looked. She saw a frog stretching his thick, ugly neck from the water.

411\_001 GRIMM'S



410\_004 MARY POPPINS



407\_005 CHAT BOTTE



408\_001 PETER PAN



FAIRY TALES

409\_001 PINOCCHIO

832

THEATRICAL

LE

AVVENTURA DI PINOCCHIO

55

La Volpe, che era zoppa, camminava appoggiandosi al Gatto e il Gatto, che era cieco, si lasciava guidare dalla Volpe.

— Buon giorno, Pinocchio — gli disse la Volpe, salutandolo garbatamente.

— Com'è che sai il mio nome? — domandò il povero pappagallo.

— Conosco bene il tuo babbo.

— Dove l'hai veduto?

— L'ho veduto ieri sulla porta di casa sua.

— E che cosa faceva?

— Era in maniche di camicia e tremava dal freddo.

— Povero babbo! Ma, se Dio vuole, da oggi in poi non tremerà più.

— Perché?

— Perché io sono diventato un gran signore.

— Un gran signore tu? — disse la Volpe.



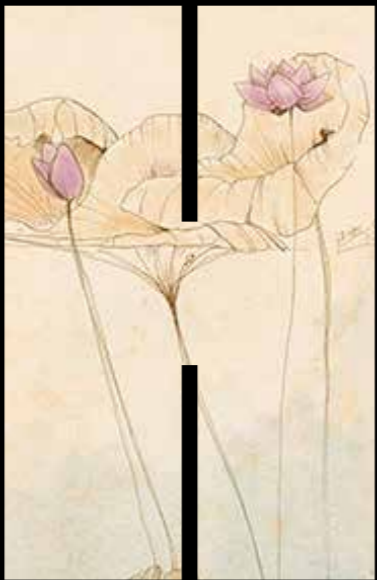


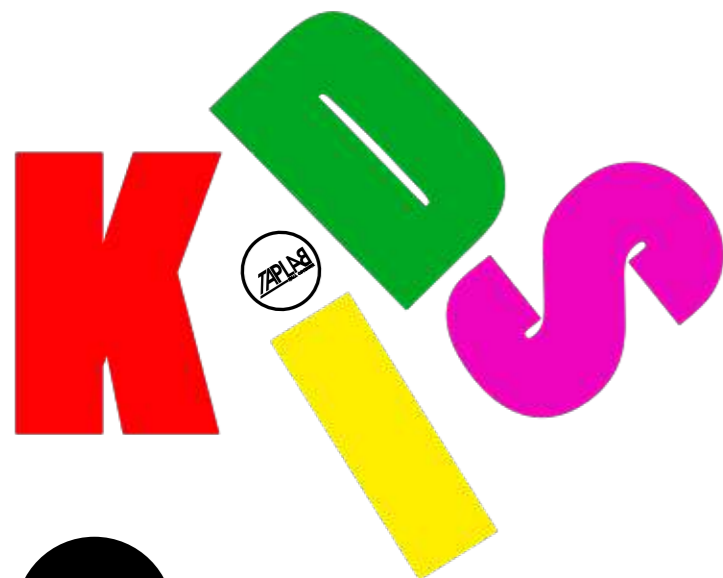




500\_001\_MÅNESKIN







**TAPLAB WALL COVERING SRL**  
VIA SAN GIMIGNANO 108  
POGGIBONSI (SI) ITALY

[info@taplab.it](mailto:info@taplab.it)

Assistenza clienti e Ufficio marketing  
[press@taplab.it](mailto:press@taplab.it)  
T. +39 0577 985836  
[taplab.it](http://taplab.it)

Print  
TapGrafiche 2022

TapLab si riserva di aggiornare e modificare in qualsiasi momento e senza preavviso i dati e i materiali di questo catalogo. TapLab has the right to updated and change the data and the materials contained in the catalogue at any time and without notice.

Le tonalità dei decori riportati sul catalogo sono da ritenersi puramente indicativi. The shades of the decorations on the catalog are to be regarded as purely indicative.

